

PORTFOLIO IDENTITY EXAMPLES



SLYART

IDENTITY • BRANDING • COLLATERAL

Creativity, Balance and Direction for your Business Image

Multioffice Industrial and Clerical General Staffing Agency in the
Inland Empire CA and MI



Matt Thalmayer
President

909-792-1252 ext. 202
Fax 909-792-0293
matt@arrowstaffing.com

499 W. State Street, Redlands, CA 92373
www.arrowstaffing.com

Ontario Address:
1600 S. Grove Ave., Suite B
Ontario, CA 91761
909-786-4320
Fax 909-786-4324

Corporate Office:
499 W. State Street
Redlands, CA 92373
909-792-1252
Fax 909-792-1252
www.arrowstaffing.com

Michigan Address:
2965 28th St
Kentwood, MI 49521
616-681-1111



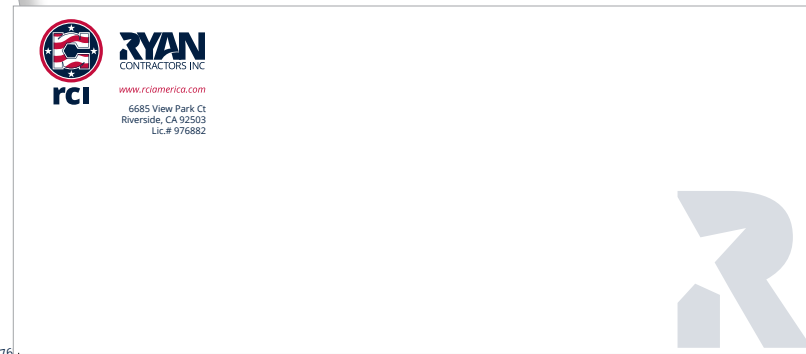
499 W. State Street
Redlands, CA 92373



Logo Redesign for that America Pride Look. Ryan Contractors Inc
specializing in retail build-outs across the USA



www.rciamerica.com



Ryan Contractors Inc specializing in retail build-outs across the USA



rci



Local Insurance Agency/Affiliate in Milton MA



DPS Insurance
Group, Inc.
Berry Insurance South



DPS Insurance
Group, Inc.
Berry Insurance South

500 Granite Avenue, Suite 3, Milton, MA 02186
ph [617] 479-5500
cell [508] 733-3710
fx [617] 479-8761
dsullivan@berryinsurancesouth.com
www.berryinsurancesouth.com

Dan Sullivan *President*



DPS Insurance
Group, Inc.
Berry Insurance South

500 Granite Avenue, Suite 3, Milton, MA 02186

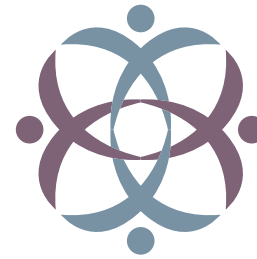
500 Granite Avenue, Suite 3, Milton, MA 02186 ph [617] 479-5500 fx [617] 479-8761 www.berryinsurancesouth.com



Family Law Advisors located in Central MA



Amy M. Antonellis, Partner
amy@familylegalpartners.com
Jason M. Carrozza, Partner
jason@familylegalpartners.com



Family Legal Partners, P.C.



Family Legal Partners, P.C.

Amy M. Antonellis, Partner
amy@familylegalpartners.com

2 Master Drive, Suite 4, Franklin, MA 02038
P (508) 803-1333 F (508) 803-8655
www.familylegalpartners.com



Family Legal Partners, P.C.
2 Master Drive, Suite 4
Franklin, MA 02038

2 Master Drive, Suite 4
Franklin, MA 02038

www.familylegalpartners.com

P (508) 803-1333
F (508) 803-8655

Owned and Operated Bi-Weekly 16pg Musical Entertainment Publication in MA

The image shows the front and back of a business card for INFINITE Health & Wellness. The front of the card features the company logo, name, address, phone number, and email. The back of the card features the company logo, name, address, phone number, email, and a maroon banner with the text "Holistic Health Practice ~ Homeopathy, Acupressure, Nutrition".

Front of Card:

- Phone: |617| 678-4088
- Logo: INFINITE Health & Wellness
- Address: 51 Mill Street, Suite 8, Hanover, MA 02339
- Website: www.yourinfinitewellness.com

Back of Card:

- Logo: INFINITE Health & Wellness
- Address: 51 Mill Street, Suite 8, Hanover, MA 02339
- Phone: |617| 678-4088
- Email: kat@yourinfinitewellness.com
- Website: www.yourinfinitewellness.com
- Banner: Holistic Health Practice ~ Homeopathy, Acupressure, Nutrition



INFINITE

Health & Wellness

The image shows the back of a business card for INFINITE Health & Wellness. It features the company logo, name, address, phone number, and email. A maroon banner at the bottom contains the text "Holistic Health Practice ~ Homeopathy, Acupressure, Nutrition".

Back of Card:

- Logo: INFINITE Health & Wellness
- Address: 51 Mill Street, Suite 8, Hanover, MA 02339
- Phone: |617| 678-4088
- Email: kat@yourinfinitewellness.com
- Website: www.yourinfinitewellness.com
- Banner: Holistic Health Practice ~ Homeopathy, Acupressure, Nutrition



The Law Offices of Kenneth Golberg a General Attorney at Law in Brockton MA



One Store - One Team thematic way of thinking different;
as One Store, One Apple Team. ©2012 Apple Inc



S T O R E | T E A M



Lacross supply store for equipment and apparel located on Cape Cod MA



FreeB



Multioffice Regional Savings Bank from SE MA to RI



RANDOLPH SAVINGS BANK

Established 1851



Subdivision of Keller Williams Realty for a team of Real Estate Professionals in MA

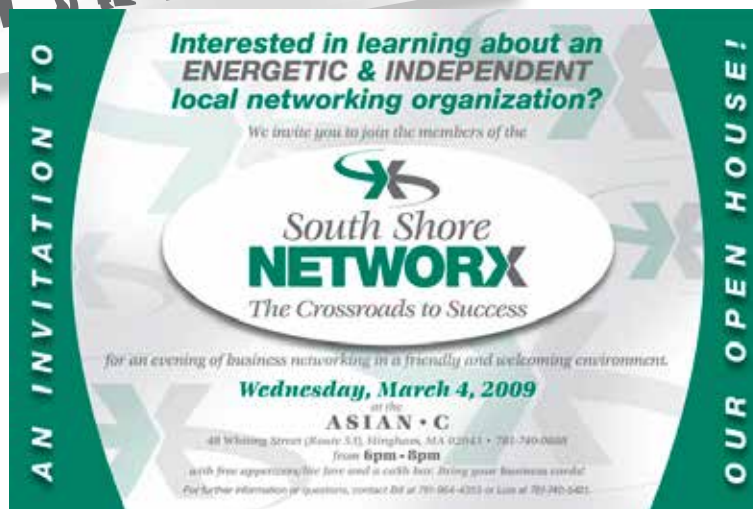


The business card features the logo at the top left. Below the logo, the name 'Bill D'Entremont' is written in a large, bold, sans-serif font. Below the name, the phone number '781 964-4353' is written in a large, bold, sans-serif font. Below the phone number, the website 'www.BillMoves.com' is written in a smaller, sans-serif font. At the bottom left, the Keller Williams Realty logo is visible. At the bottom right, the text 'Each Keller Williams Office is Independently Owned and Operated' is written in a small, sans-serif font.

The business card features the logo at the top left. Below the logo, the name 'Bill D'Entremont' is written in a large, bold, sans-serif font. Below the name, the text 'Broker, CBR' is written in a smaller, sans-serif font. Below this, the contact information is listed: 'c 781 964-4353', 'e billyd@kw.com', and 'w www.thedentremontgroup.com'. A small portrait photo of Bill D'Entremont is positioned on the right side of the card.



Local Networking organization for small business' without the BNI committment, serving the South Shore of Boston MA



South Shore
NETWORKX
The Crossroads to Success

A White Glove Catering Service serving food from Bakehouse Bistro in Raleigh, NC



BAKEHOUSE BISTRO



Branch Affiliated Bank Logo in Brockton, MA



LIBERTY BANK

A division of
Holbrook Cooperative Bank

HOLBROOK
Cooperative Bank



LIBERTY
BANK
A division of
Holbrook Cooperative Bank

James R. Barbieri
President & CEO

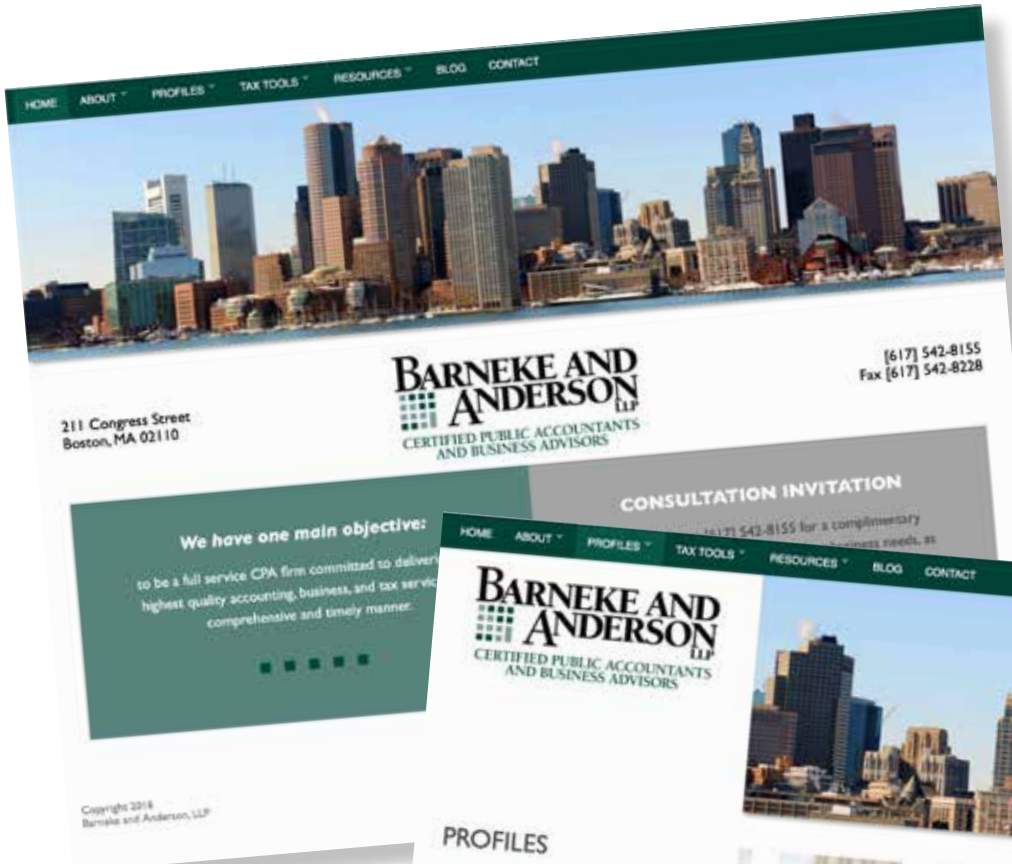
95 N. Franklin Street
Holbrook, MA 02343
781.767.1888
Fax 781.767.0515

60 Crescent Street
Brockton, MA 02301
508.580.0005
jbarbieri@holbrookcoop.com



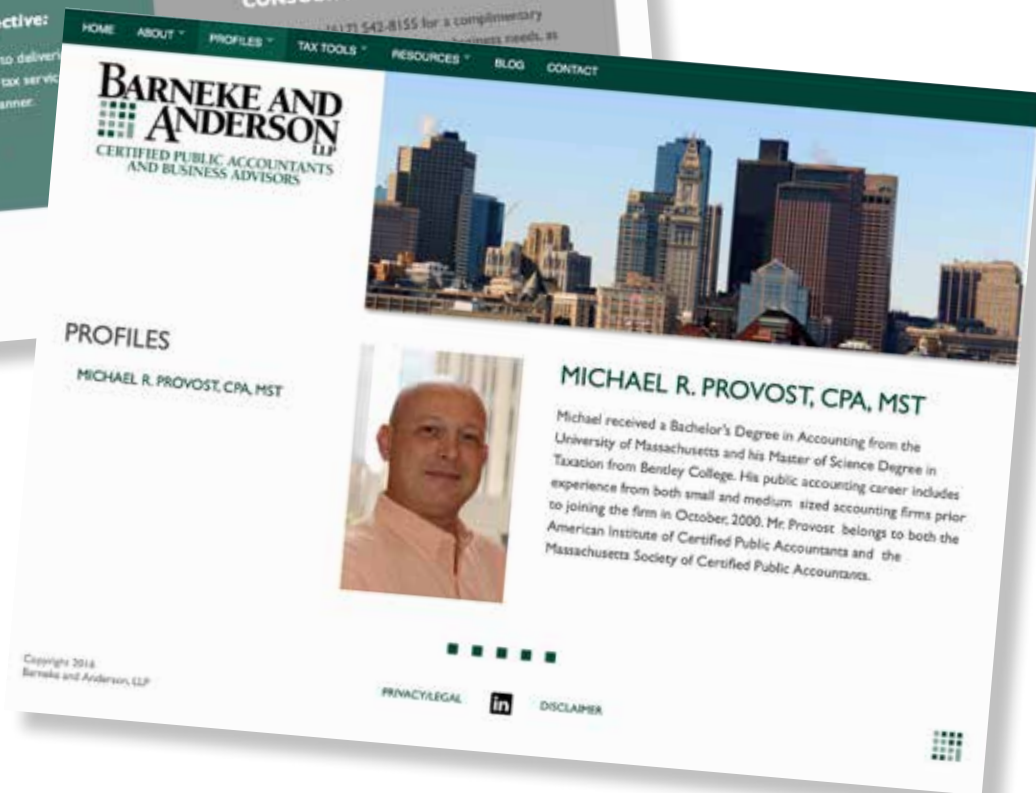
SLYART
IDENTITY • BRANDING • COLLATERAL

CPA and Business Advisors in Boston MA



BARNEKE AND ANDERSON LLP

CERTIFIED PUBLIC ACCOUNTANTS
AND BUSINESS ADVISORS



NuTone's Innovative In-Home Vacuum System

Think outside the cylinder.

INTRODUCING THE NuTone® Vaxima™

A central vacuum so innovative it will change the category forever. Designed to be dealer and consumer friendly in every way, it's not just the shape that is revolutionary. NuTone's exclusive patented **TurboQuiet™** technology combines an exciting new oval cyclonic design, built-in noise reduction and high efficiency motor for a never before seen level of central vacuum performance.

Maximum power.
Maximum quiet.
Maximum cleaning.
That's **Vaxima™**.

NuTone® Vaxima™ 3000

A new era in central vacuum form and function.

www.nutonevaxima.com
888-336-3948



Vaxima 3000

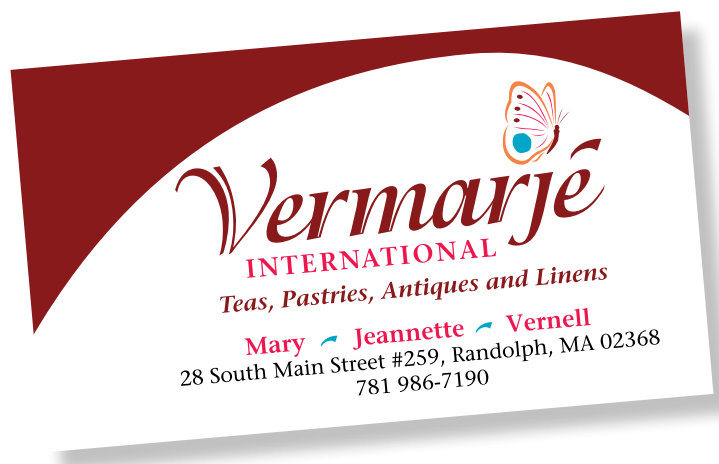
Three ladies and an idea for female tea & pastry shop to relax and browse unique items



Vermarjé

INTERNATIONAL

Teas, Pastries, Antiques and Linens



A Surface Coating company for a variety of industries and products in Cambridge MA



Local organization helping the fishermen and their industry to co-exist
on the South Shore and Cape Cod of MA



Owned and Operated Bi-Weekly 16pg Musical Entertainment Publication in MA



2000

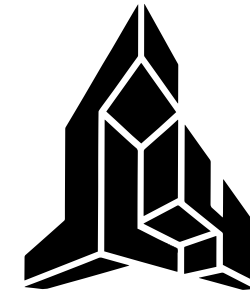


A little history



2005

1986



SLYART

Sly Design

1999



SLYART

